

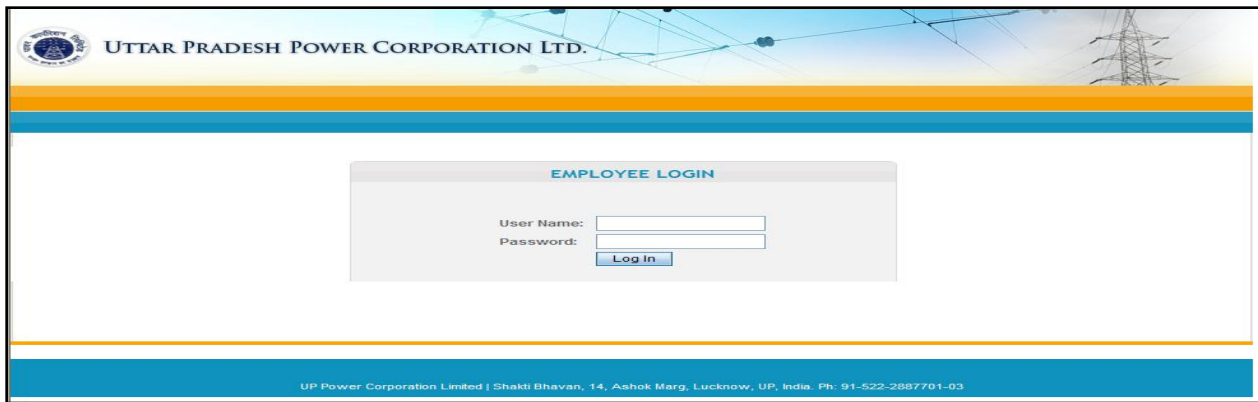
Outage Monitoring :

Outage Monitoring is done by using SAIFI/SAIDI reports. This report is used to monitor the feeder health during the month (Study Period), its Max demand during the Month, reliability factors, and Power availability so as to check the functionality of the feeder during the month. It also helps to identify unmetered location, MF issue, Outages.

Step for generating SAIDI-SAFI report:

To understand and generating MDAS reports, you need to login into the application and follow steps:-

- Enter the URL in the address bar of the internet browser as shown-
http://sso.uppclonline.com:8080/opensso/UI/Login.
- Enter User Name and Password in the respective **EMPLOYEE LOGIN** screen.
- Click Log In. The system displays the R-APDRP System Home Page.
- Click MDAS link. The MDAS Home Page is opened.
- MDAS Home Page → Global → Reports → View Report.
- Click **MIS Reports Network wise** and select **Report 101**.
- **View Report detail**. Select Date/Month and click **Show Study**.
- Select **Study**. All devices are appeared and select all substations.
- SAIDI SAIFI Report appeared.



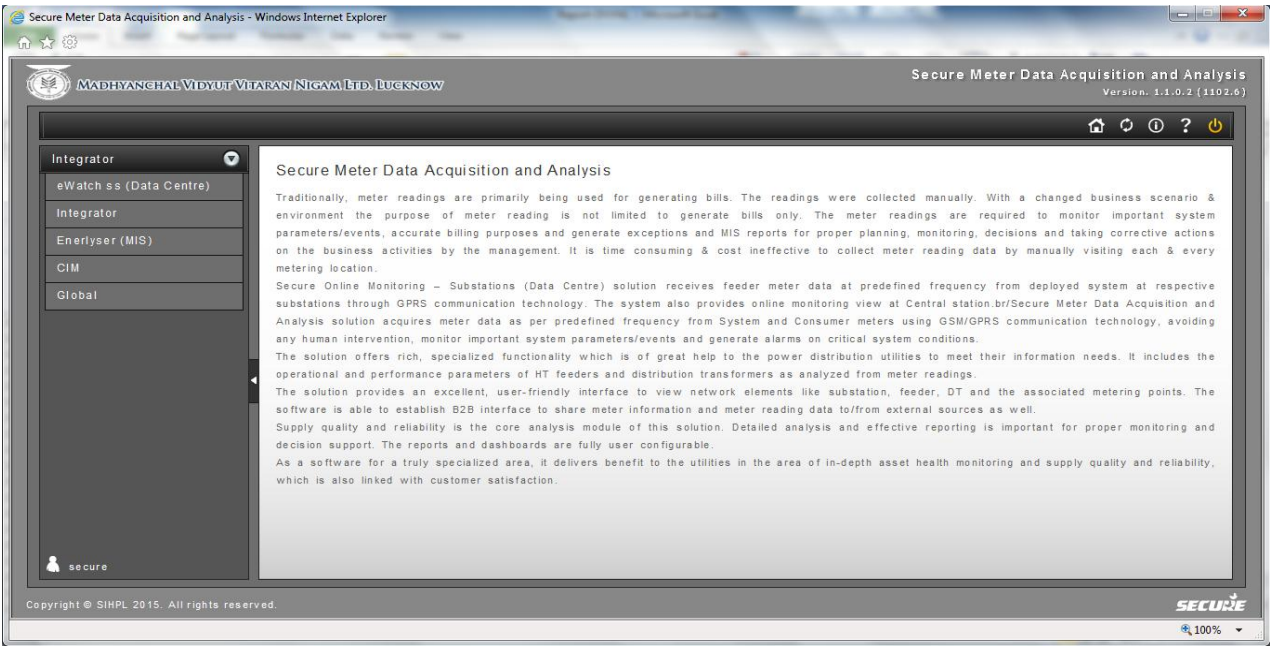
(1) System Login Page



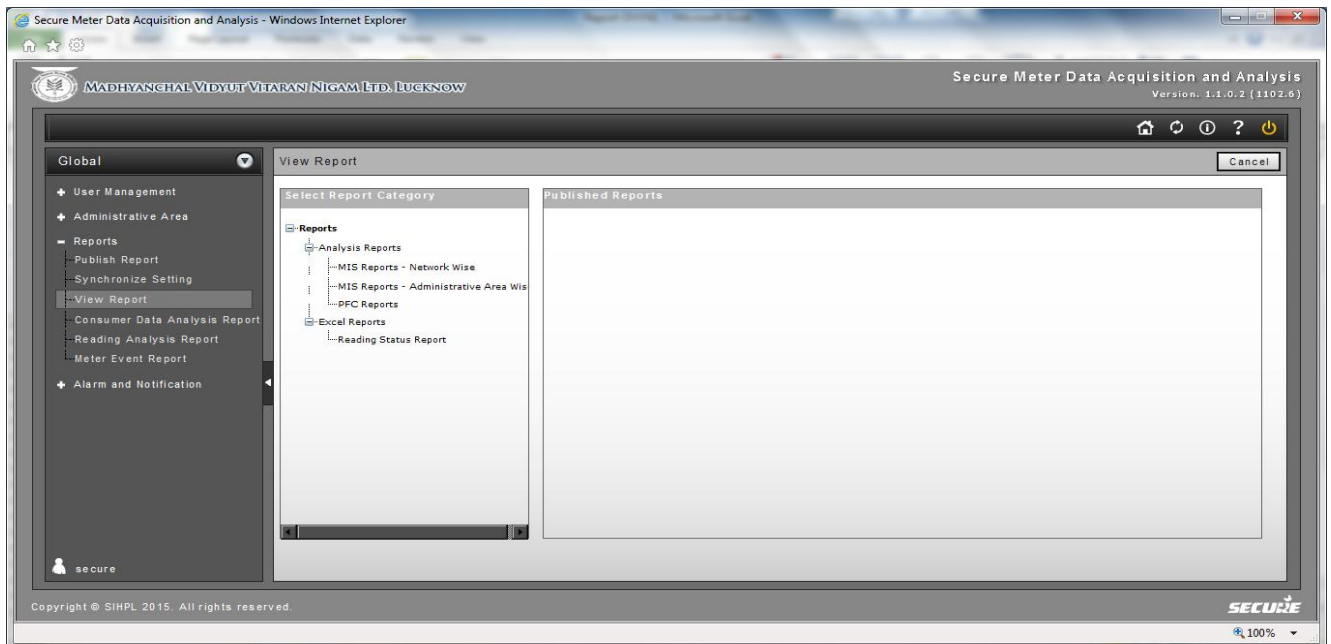
(2) R-APDRP System Home Page



(3) Click MDAS link



(4) MDAS Home Page



(5) Global: View Report

Secure Meter Data Acquisition and Analysis - Windows Internet Explorer

MADHYANGHAL VIDYUT VIVARAN NIGAM LTD. Lucknow

Secure Meter Data Acquisition and Analysis
Version: 1.1.0.2 (1102.6)

Global

- User Management
- Administrative Area
- Reports
 - Publish Report
 - Synchronize Setting
 - View Report
 - Consumer Data Analysis Report
 - Reading Analysis Report
 - Meter Event Report
- Alarm and Notification

View Report

Select Report Category

- Reports
 - Analysis Reports
 - MIS Reports - Network Wise
 - MIS Reports - Administrative Area
 - PFC Reports
 - Excel Reports
 - Reading Status Report

Published Reports

Report ID	Report Name	Report Description	
100	Distribution Transformer-wise Unbalancing Report	Report for Unbalancing at Distribution Transformer	View Report
101	MIS Report of Distribution Feeder	Report for MIS at Distribution Feeder	View Report
102	MIS Report of Distribution Transformer	Report for MIS at Distribution Transformer	View Report
102	Operation & Reliability Report	Report for Operation & Reliability	View Report
104	MIS Report of Overloaded Distribution Transformer	Report for MIS at Overloaded Distribution Transformer	View Report
105	MIS Report of Underloaded Distribution Transformer	Report for MIS at Underloaded Distribution Transformer	View Report
106	Distribution Transformer-Reliability & Continuous Loading Report	Report for Reliability & Continuous Loading at Distribution Transformer	View Report
186	Voltage Variation Report Of Feeder And DT	Voltage Variation Report Of Feeder And DT	View Report
187	Power Factor Report Of Feeder	Power Factor Report Of Feeder	View Report
000	Metering Node	Metering Node	View Report
1			

Copyright © SIHPL 2015. All rights reserved.

javascript:_doPostBack('ct100\$contRMSMasterStvwReportCategory','s1\\5\\16')

SECURE

(6) MIS Reports Network wise

Secure Meter Data Acquisition and Analysis - Windows Internet Explorer

MADHYANGHAL VIDYUT VIVARAN NIGAM LTD. Lucknow

Secure Meter Data Acquisition and Analysis
Version: 1.1.0.2 (1102.6)

Global

- User Management
- Administrative Area
- Reports
 - Publish Report
 - Synchronize Setting
 - View Report
 - Consumer Data Analysis Report
 - Reading Analysis Report
 - Meter Event Report
- Alarm and Notification

View Report

Select Report Category

- Reports
 - Analysis Reports
 - MIS Reports - Network Wise
 - MIS Reports - Administrative Area
 - PFC Reports
 - Excel Reports
 - Reading Status Report

Published Reports

Report ID	Report Name	Report Description	
100	Distribution Transformer-wise Unbalancing Report	Report for Unbalancing at Distribution Transformer	View Report
101	MIS Report of Distribution Feeder	Report for MIS at Distribution Feeder	View Report
102	MIS Report of Distribution Transformer	Report for MIS at Distribution Transformer	View Report
103	Operation & Reliability Report	Report for Operation & Reliability	View Report
104	MIS Report of Overloaded Distribution Transformer	Report for MIS at Overloaded Distribution Transformer	View Report
105	MIS Report of Underloaded Distribution Transformer	Report for MIS at Underloaded Distribution Transformer	View Report
106	Distribution Transformer-Reliability & Continuous Loading Report	Report for Reliability & Continuous Loading at Distribution Transformer	View Report
186	Voltage Variation Report Of Feeder And DT	Voltage Variation Report Of Feeder And DT	View Report
187	Power Factor Report Of Feeder	Power Factor Report Of Feeder	View Report
000	Metering Node	Metering Node	View Report
1			

Copyright © SIHPL 2015. All rights reserved.

javascript:_doPostBack('ct100\$contRMSMaster\$dgReportDetails\$ct104\$InkEdit','')

SECURE

(7) Report 101

Secure Meter Data Acquisition and Analysis - Windows Internet Explorer

MADHYANGHAL VIDYUT VIVARAN NIGAM LTD. Lucknow

Secure Meter Data Acquisition and Analysis
Version: 1.1.0.2 (1102.6)

Global

- User Management
- Administrative Area
- Reports
 - Publish Report
 - Synchronize Setting
 - View Report
 - Consumer Data Analysis Report
 - Reading Analysis Report
 - Meter Event Report
- Alarm and Notification

View Report Detail

Download Excel Report Show Report Cancel

Report Name: MIS Report of Distribution Feeder

StudyRefNo: *

Purpose of Study: Composite

Study Period

Date Wise

From Date: To Date:

Monthly

Month: May Year: 2016

Show Study

PageBreak: *

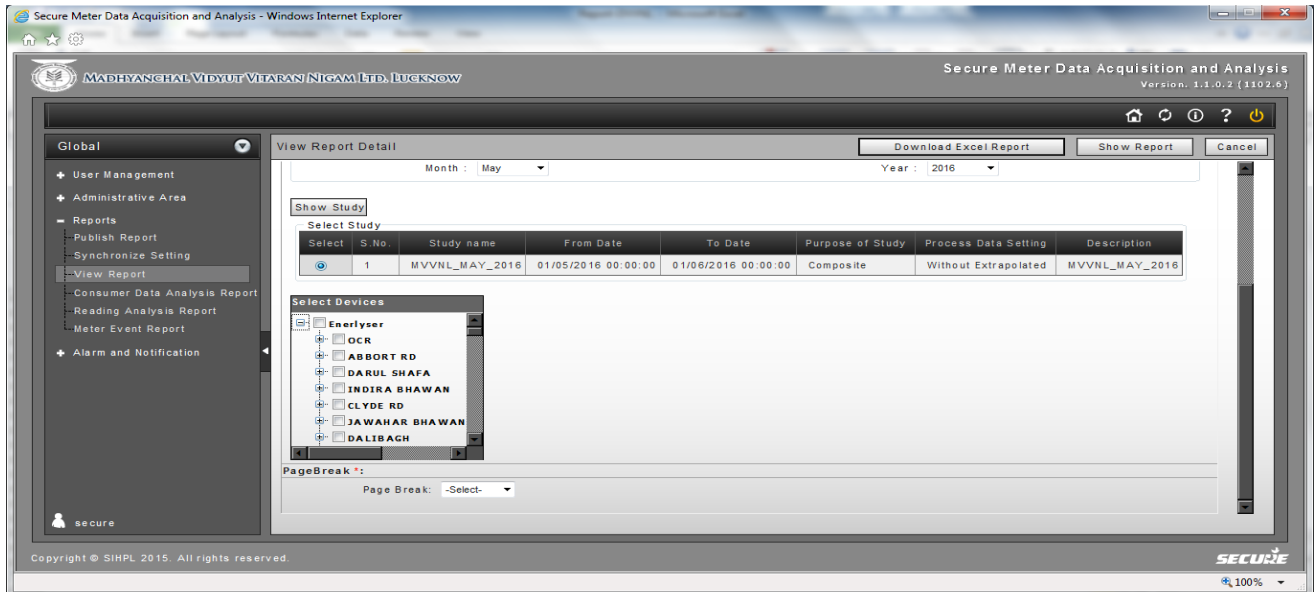
Page Break: -Select-

Copyright © SIHPL 2015. All rights reserved.

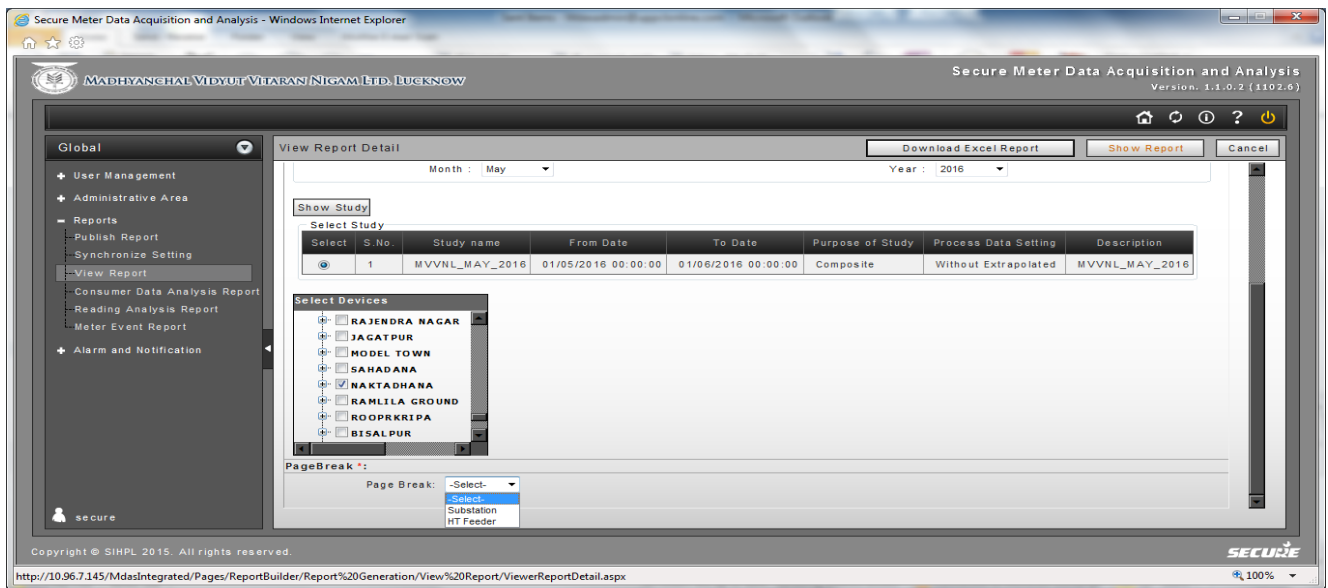
http://10.96.7.145/MdasIntegrated/Pages/ReportBuilder/Report%20Generation/View%20Report/ViewerReportDetail.aspx

SECURE

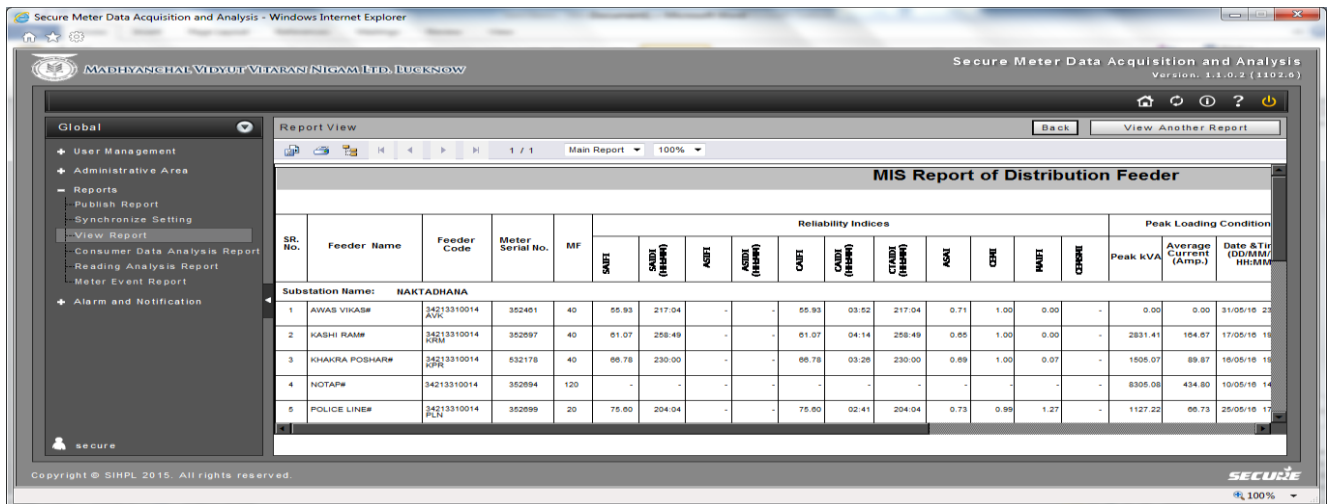
(8) View Report Detail



(9) Show Study



(10) Find Sub Station



(11) SAIDI SAIFI Report

MIS Report of Distribution Feeder

Study Period: 01-May-2016 To: 01-Jun-2016

SR. No.	Feeder Name	Feeder Code	Substation Name	Meter Serial No.	MF	Reliability Indices		Power Availability and Interruption					Peak Loading Condition			Diversity Factor	Reactive Compensation kVAR
						SAIFI	SAIDI (HH:MM)	Total (HH:MM)	On (HH:MM)	Off (HH:MM)	No.	% Availability	Peak kVA	Average Current (Amp.)	Date & Time (DD/MM/YY HH:MM)		
1	11 KVA FEEDER NO.1#	22303110107FD1	MAINPURI FATAK	UD013145	40	38.88	48:51	744:00	669:30	74:30	31	89.99	3,809.60	205.47	16/05/16 14:00	.53#	584.48
2	11 KVA FEEDER NO.2#	22303110107FD2	MAINPURI FATAK	UD013163	40	37.93	50:57	720:00	668:30	51:30	20	92.85	1,862.40	66.72	15/05/16 20:30	.27#	328
3	11 KVA FEEDER NO.3#	22303110107FD3	MAINPURI FATAK	UD013162	40	22.07	40:00	744:00	683:00	61:00	30	91.8	2,747.20	143.97	15/05/16 21:30	.24#	586.4
4	11 KVA FEEDER NO.4#	22303110107FD4	MAINPURI FATAK	UD013166	40	59.8	63:06	744:00	674:30	69:30	29	90.66	1,123.20	63.65	20/05/16 15:00	.45#	550.4
5	11 KVA FEEDER NO.5#	22303110107FD5	MAINPURI FATAK	UD013164	40	17.62	28:43	744:00	709:00	35:00	20	95.3	0.00	0	31/05/16 23:30	-	-
6	NOTAP	22303110107	MAINPURI FATAK	-	0	-	-	-	-	-	-	-	-	-	-	-	-

(12) SAIDI SAIFI Report